

HISCKENO HK14A

The HK14A is a compact mini excavator engineered for light-duty excavation and landscaping, offering tight-space maneuverability and efficient digging capability. Its smaller footprint makes it ideal for residential jobs, small lots, and rental fleets where ease of transport and versatility are key.

Motor:
Briggs & Stratton

Fuel:
Gas

Standard Features

- ✓ 13.5 HP
- ✓ Hydraulic Thumb

Optional Features

- ✓ Side Swing Boom
- ✓ Retractable Tracks

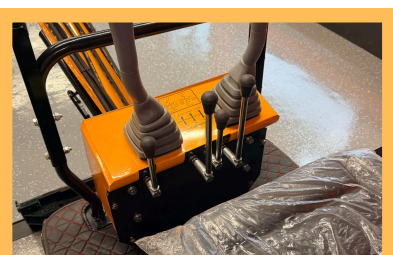
Size Chart

Height: 28.'
Width: 3.05'
Length: 9'
Track Width: 7.08"
Track Length: 48.43'

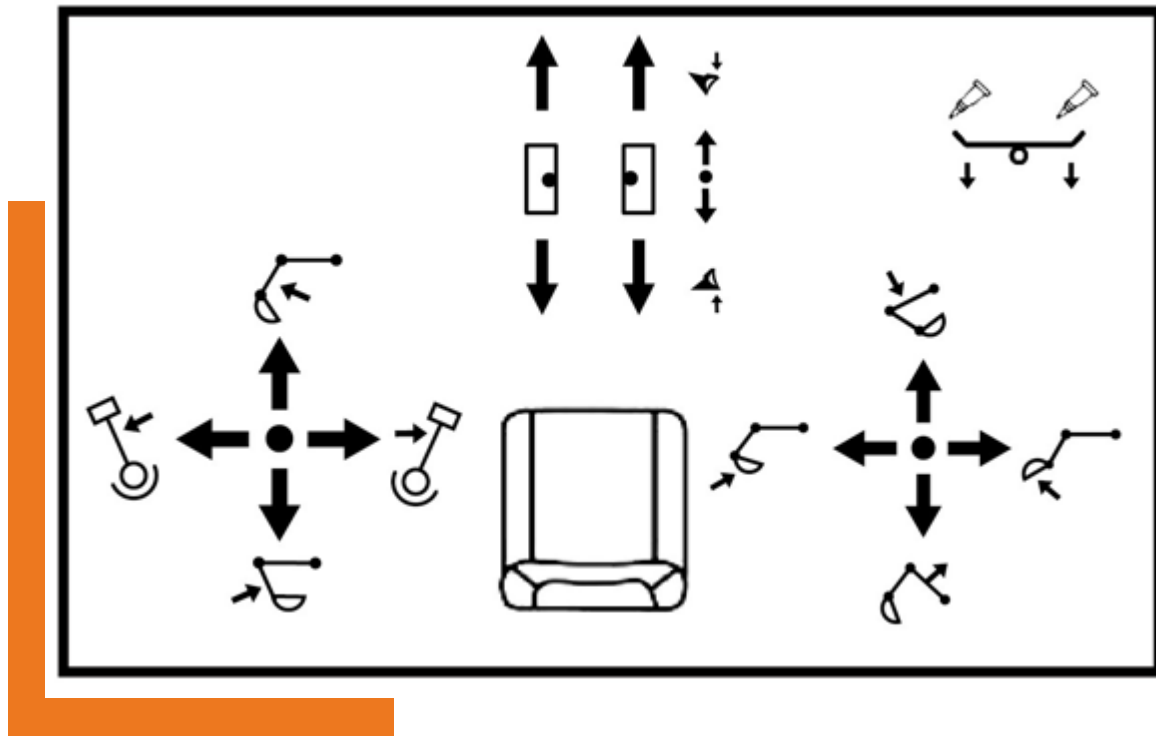
Operating Weight: 2,204 lbs
Turn Radius: 4.4'
Chassis Ground Clearance: 5.2'

Digging Specs.

Max Digging Height: 8.57'
Max Dumping Height: 6.07'
Max Digging Depth: 5.4'
Max Digging Radius: 9.4'



HK14A



Traveling

Use the traveling handles.

-Straight

Forwards or backward move the handle, running the machine forwards or backwards.

-Steering

Left turn in situ: backward shift the left handle and meanwhile forward push the right handle.

Right turn in situ: backward shift right handle and meanwhile forward push the left handle.

Left turn with left track as axis: forward move the right handle

Right turn with right track as axis: forward move the left handle

HK14A

Excavation

The excavator slewing and the work equipment are respectively controlled with two handles, with positions shown below:

-Basic excavation

Before excavation, the arm cylinder should have angle with the arm as 90° , bucket with ground to be excavated as 30° . Only in such case, can each cylinder have the max excavating force. It is suitable for relatively hard soil, so as to decrease the excavating resistance.

To excavate any soft soil, bucket should be angled with the soil to be 60° , increasing the work efficiency.

-Lower excavation

Keep the angle between bucket base and the bevel at 30° , and retract the arm to start work.

-Upper excavation

Keep the bucket blade vertical to the ground, and retract the arm to start work.

-Ditching is carried out in 7 steps, as shown in figure.

